

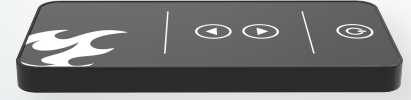
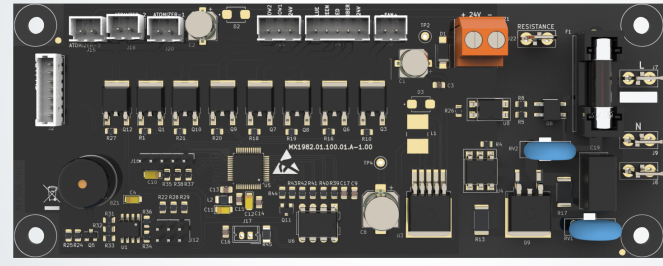
# 3D Electric Fireplace Control Set #1982-V1.00

## Fields of Application

- 3D Electric Fireplace
- Steam machines with Air Humidifier
- Entertainment Electronics  
(stage shows or theme parks etc.)

## Main Features

- Capacitive touch keypad
- IR Remote control
- Key tone responses with onboard Buzzer
- RGB + Amber Flame LED function
- 2 x Show LED function
- Resistance output
- Fan control
- 3 x Atomizer connections
- Audio functions with external speaker
- Adjustable flame level function
- Adjustable burning sound function



## General Features

It is used for electric fireplace systems that create a flame effect with cold steam. Since they are for decorative purposes, they do not have a heating function. It can be controlled with IR remote and keypad. It can control functions such as On/Off, flame level and color, burning sound level. It can operate the atomizer at different levels to ionize the water. Safety input is available to detect low water level.

## Technical Specifications

Supply voltage	24V DC
Fuse	External 20A Fuse
Storage Temperature	-20°C ... +80°C
Operating temperature	-10°C ... +60°C
Timing	Resistance: 20 sec Fan Intensity: 0-2 sec 100% Fan Intensity: 2+ sec 40%
Connections	Energy and Resistance Connections: 6.2x0.8mm FASTON Terminal 24VDC Supply: Terminal Block 5.08mm 2P Atomizer Connection: Connector 2.50mm 2P 180C Male (x3) Keypad Connection: Connector 2.00mm 7P 180C Male RGB LED Connection: Connector 2.50mm 5P 180C Male Animation LED Connection: Connector 2.50mm 3P 180C Male
Electrical Values	Resistors: 150W, 300W, 600W Fan: 24VDC/0.5A Atomizer: 24VDC/0.5A Speakers: 5W, 8R LEDs: 24VDC/1A (per channel)
Accessories	Capacitive Keypad, Connection Cable, IR Controller, Speaker set
Protection Functions	Low Water Level High Resistance Current Atomizer Failure Detection

**MYSIA**  
Electronic

MYSIA Elektrik Elektronik  
Bilgisayar Yazılım San. Tic. A.Ş.  
www.mysia.eu

